

Doc id: 542788



Drione®

ACCEPTED
VIA NOTIFICATION
LABEL NOT REVIEWED

July 20, 2015

New York State Department
of Environmental Conservation
Division of Materials Management
Pesticide Product Registration

INSECTICIDE

- RECOMMENDED FOR INDUSTRIAL/COMMERCIAL USE
- A DESICCANT DUST
- PROVIDES QUICK CONTROL
- KILLS UP TO 6 MONTHS WHEN LEFT UNDISTURBED
- NON-STAINING AND RELATIVELY ODORLESS
- FOR USE IN RESIDENCES, INSTITUTIONS, FOOD PLANTS, AND GRANARIES
- CONTROLS ANTS, COCKROACHES, SILVERFISH, BEDBUGS, FLEAS, LICE, BEES, AND AS STIPULATED IN THE USE DIRECTIONS, ON NUMEROUS STORED PRODUCT PESTS AND TO PROTECT AGAINST ENTRANCE OF DRYWOOD TERMITES.

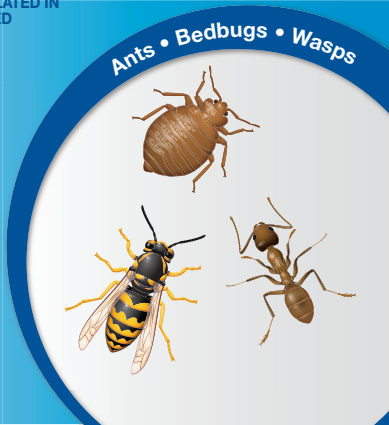
ACTIVE INGREDIENTS:

Pyrethrins:	1.0%
* Piperonyl Butoxide.....	10.0%
Amorphous Silica Gel:.....	40.0%
** OTHER INGREDIENTS:.....	49.0%
TOTAL:	100.0%

* (butylcarbityl) (6-propylpiperonyl) ether and related compounds.
** Contains Petroleum Distillate
EPA Reg No. 432-992

**KEEP OUT OF
REACH OF CHILDREN
CAUTION**

Net Contents
1 Pound
04191241 04490818E 141014AV1



<p>For MEDICAL and TRANSPORTATION Emergencies ONLY Call 24 Hours A Day 1-800-334-7577 For PRODUCT USE Information Call 1-800-331-2867</p>	
FIRST AID	
If on skin or clothing:	<ul style="list-style-type: none"> • Take off contaminated clothing. • Rinse skin immediately with plenty of water for 15 - 20 minutes. • Call a poison control center or doctor for treatment advice.
If in eyes:	<ul style="list-style-type: none"> • Hold eye open and rinse slowly and gently with water for 15 - 20 minutes. • Remove contact lenses, if present, after the first 5 minutes, then continue rinsing eye. • Call a poison control center or doctor for treatment advice.
If swallowed	<ul style="list-style-type: none"> • Immediately call a poison control center or doctor. • Do not give any liquid to the person. • Do not induce vomiting unless told to by a poison control center or doctor. • Do not give anything by mouth to an unconscious person.
<p>HOT LINE NUMBER: 1-800-331-2867 [Pyrethroid]</p>	
<p>Have the product container or label with you when calling a poison control center or doctor, or going for treatment.</p>	
<p>NOTE TO PHYSICIAN: Contains petroleum distillate. Vomiting may cause aspiration pneumonia.</p>	
PRECAUTIONARY STATEMENTS	
HAZARDS TO HUMANS & DOMESTIC ANIMALS	
CAUTION	
Harmful if absorbed through skin. Causes moderate eye irritation. Avoid contact with skin, eyes or clothing.	
PERSONAL PROTECTIVE EQUIPMENT (PPE)	
Loaders, applicators and other handlers must wear the following:	
<ul style="list-style-type: none"> • Long-sleeved shirt and long pants, • Shoes and socks; and • Chemical-resistant gloves made of barrier laminate, nitrile rubber, neoprene rubber, or viton. 	
USER SAFETY REQUIREMENTS	
Follow manufacturer's instructions for cleaning/maintaining PPE. If no such instructions for washables exist, use detergent and hot water. Keep and wash PPE separately from other laundry.	
Discard clothing and other absorbent materials that have been drenched or heavily contaminated with this product's concentrate. Do not reuse them.	
2	

4"

4.375"

USER SAFETY RECOMMENDATIONS

- Users should wash hands before eating, drinking, chewing gum, using tobacco, or using the toilet.
- Users should remove clothing/PPE immediately if pesticide gets inside. Then wash thoroughly and put on clean clothing.
- Users should remove PPE immediately after handling this product. Wash the outside of gloves before removing. As soon as possible, wash thoroughly and change into clean clothing.

ENVIRONMENTAL HAZARDS

This product is toxic to aquatic organisms, including fish and invertebrates. Drift and runoff may be hazardous to aquatic organisms in water adjacent to treated areas. This product may contaminate water through runoff. This product has a potential for runoff for several weeks after application. Poorly draining soils and soils with shallow water tables are more prone to produce runoff that contains this product.

Do not apply directly to water, to areas where surface water is present or to intertidal areas below the mean high water mark. Do not contaminate water when disposing of equipment wash-waters or rinsate.

This product is highly toxic to bees exposed to direct treatment on blooming crops or weeds. Do not apply this product or allow it to drift to blooming crops or weeds while bees are actively visiting the treatment area.

DIRECTIONS FOR USE

It is a violation of Federal law to use this product in a manner inconsistent with its labeling.

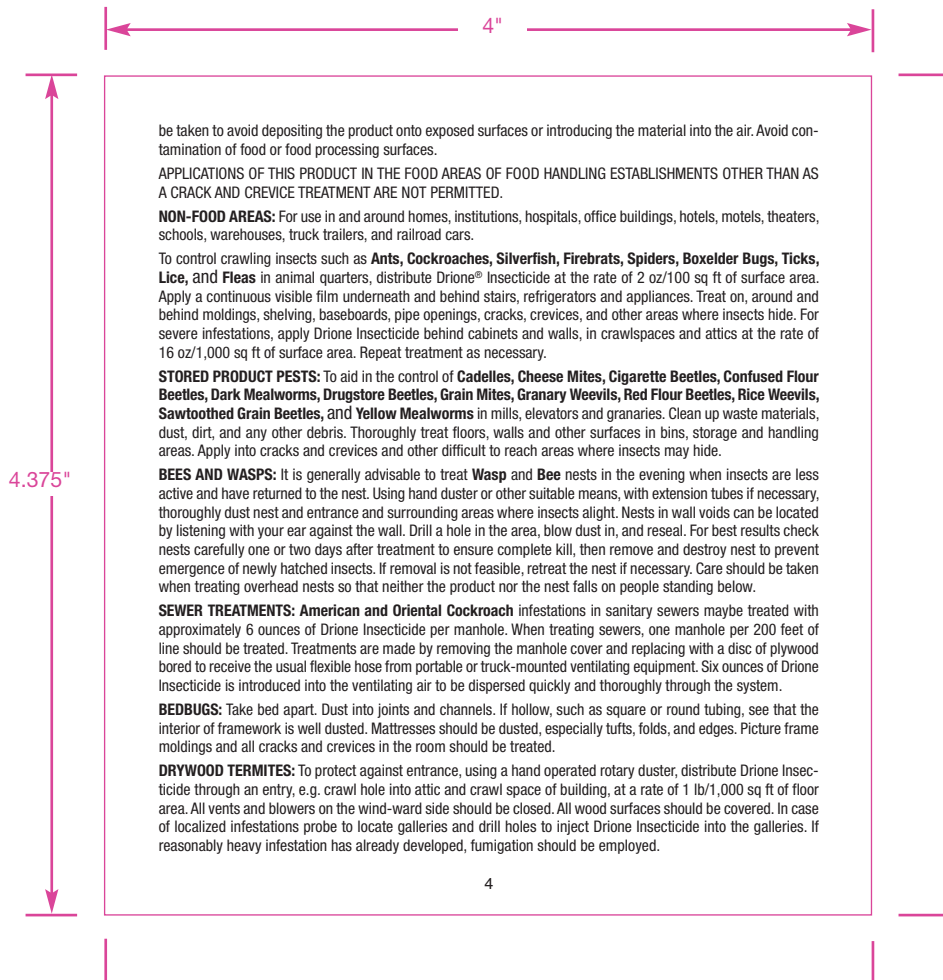
PRECAUTIONS AND RESTRICTIONS

- Do not enter or allow others to enter until dusts have settled.
- Remove and cover exposed food and drinking water before application.
- Remove or cover dishes, utensils, food processing equipment, and food preparation surfaces, or wash them before use.
- Except when applying to sewers or drains as instructed on this label, do not apply directly to sewers or drains, or to any area like a gutter where drainage to sewers, storm drains, water bodies, or aquatic habitat can occur.
- Do not apply this product in a way that will contact workers or other persons, either directly or through drift. Only protected handlers may be in the area during application.
- Aerial applications are prohibited.
- Applications with power duster equipment are prohibited.
- Only apply as a spot treatment to areas no greater than 2 feet by 2 feet per room.
- Do not use in aircraft cabins.

APPLICATIONS WITHIN FOOD AREAS: For use in and around food processing plants and warehouses, bakeries, beverage plants, restaurants, supermarkets, meat and poultry processing plants, hotels, motels, hospitals, and schools.

LIMITED TO CRACK AND CREVICE TREATMENT ONLY: Using a bulbous duster, apply a small amount of material directly into cracks and crevices such as expansion joints between different elements of construction or between equipment bases and the floor, wall voids, motor housings, junction boxes or switch boxes, conduits or hollow equipment legs where **Cockroaches, Ants, Silverfish, Spiders, Boxelder Bugs, and Crickets** hide. Care should

3



be taken to avoid depositing the product onto exposed surfaces or introducing the material into the air. Avoid contamination of food or food processing surfaces.

APPLICATIONS OF THIS PRODUCT IN THE FOOD AREAS OF FOOD HANDLING ESTABLISHMENTS OTHER THAN AS A CRACK AND CREVICE TREATMENT ARE NOT PERMITTED.

NON-FOOD AREAS: For use in and around homes, institutions, hospitals, office buildings, hotels, motels, theaters, schools, warehouses, truck trailers, and railroad cars.

To control crawling insects such as **Ants, Cockroaches, Silverfish, Firebrats, Spiders, Boxelder Bugs, Ticks, Lice, and Fleas** in animal quarters, distribute Drione[®] Insecticide at the rate of 2 oz/100 sq ft of surface area. Apply a continuous visible film underneath and behind stairs, refrigerators and appliances. Treat on, around and behind moldings, shelving, baseboards, pipe openings, cracks, crevices, and other areas where insects hide. For severe infestations, apply Drione Insecticide behind cabinets and walls, in crawlspaces and attics at the rate of 16 oz/1,000 sq ft of surface area. Repeat treatment as necessary.

STORED PRODUCT PESTS: To aid in the control of **Cadelles, Cheese Mites, Cigarette Beetles, Confused Flour Beetles, Dark Mealworms, Drugstore Beetles, Grain Mites, Granary Weevils, Red Flour Beetles, Rice Weevils, Sawtoothed Grain Beetles, and Yellow Mealworms** in mills, elevators and granaries. Clean up waste materials, dust, dirt, and any other debris. Thoroughly treat floors, walls and other surfaces in bins, storage and handling areas. Apply into cracks and crevices and other difficult to reach areas where insects may hide.

BEES AND WASPS: It is generally advisable to treat **Wasp and Bee** nests in the evening when insects are less active and have returned to the nest. Using hand duster or other suitable means, with extension tubes if necessary, thoroughly dust nest and entrance and surrounding areas where insects alight. Nests in wall voids can be located by listening with your ear against the wall. Drill a hole in the area, blow dust in, and reseal. For best results check nests carefully one or two days after treatment to ensure complete kill, then remove and destroy nest to prevent emergence of newly hatched insects. If removal is not feasible, retreat the nest if necessary. Care should be taken when treating overhead nests so that neither the product nor the nest falls on people standing below.

SEWER TREATMENTS: American and Oriental Cockroach infestations in sanitary sewers maybe treated with approximately 6 ounces of Drione Insecticide per manhole. When treating sewers, one manhole per 200 feet of line should be treated. Treatments are made by removing the manhole cover and replacing with a disc of plywood bored to receive the usual flexible hose from portable or truck-mounted ventilating equipment. Six ounces of Drione Insecticide is introduced into the ventilating air to be dispersed quickly and thoroughly through the system.

BEDBUGS: Take bed apart. Dust into joints and channels. If hollow, such as square or round tubing, see that the interior of framework is well dusted. Mattresses should be dusted, especially tufts, folds, and edges. Picture frame moldings and all cracks and crevices in the room should be treated.

DRYWOOD TERMITES: To protect against entrance, using a hand operated rotary duster, distribute Drione Insecticide through an entry, e.g. crawl hole into attic and crawl space of building, at a rate of 1 lb/1,000 sq ft of floor area. All vents and blowers on the wind-ward side should be closed. All wood surfaces should be covered. In case of localized infestations probe to locate galleries and drill holes to inject Drione Insecticide into the galleries. If reasonably heavy infestation has already developed, fumigation should be employed.

FLEAS: Surfaces of kennels should be dusted at the rate of one oz/50 sq ft. Heavily infested lawns, basements, and crawl spaces should be dusted at the rate of 16 oz/1,000 sq ft. Repeat as necessary.

SOWBUGS, PILLBUGS, GROUND BEETLES, EARWIGS, MILLIPEDES, CENTIPEDES, AND SCORPIONS: Apply around doors and windows and other places where these pests may enter premises. Treat baseboards, storage areas and other locations where these pests are found.

STORAGE AND DISPOSAL

Do not contaminate water, food, or feed by storage or disposal.

PESTICIDE STORAGE: Store in original sealed container in a cool, dry place inaccessible to children and pets.

CONTAINER HANDLING: If empty: Non-refillable container. Do not reuse or refill this container. Place in trash or offer for recycling if available. If partly filled: Call your local solid waste agency for disposal instructions. Never place unused product down any indoor or outdoor drain.

IMPORTANT: READ BEFORE USE

Read the entire Directions for Use, Conditions, Disclaimer of Warranties and Limitations of Liability before using this product. If terms are not acceptable, return the unopened product container at once.

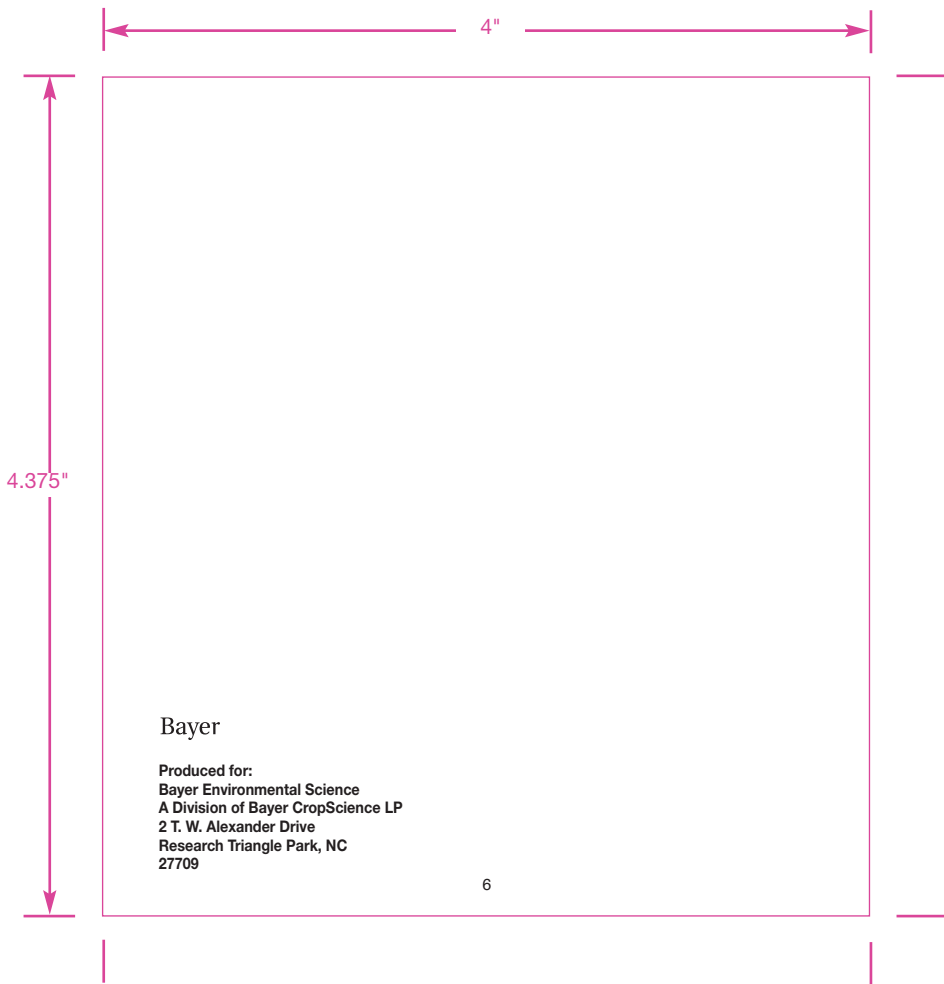
By using this product, user or buyer accepts the following Conditions, Disclaimer of Warranties and Limitations of Liability.

CONDITIONS: The directions for use of this product are believed to be adequate and must be followed carefully. However, it is impossible to eliminate all risks associated with the use of this product. Crop injury, ineffectiveness or other unintended consequences may result because of such factors as weather conditions, presence of other materials, or the manner of use or application, all of which are beyond the control of Bayer CropScience LP. All such risks shall be assumed by the user or buyer.

DISCLAIMER OF WARRANTIES: TO THE EXTENT CONSISTENT WITH APPLICABLE LAW, BAYER CROPSCIENCE LP MAKES NO OTHER WARRANTIES, EXPRESS OR IMPLIED, OF MERCHANTABILITY OR OF FITNESS FOR A PARTICULAR PURPOSE OR OTHERWISE, THAT EXTEND BEYOND THE STATEMENTS MADE ON THIS LABEL. No agent of Bayer CropScience LP is authorized to make any warranties beyond those contained herein or to modify the warranties contained herein. TO THE EXTENT CONSISTENT WITH APPLICABLE LAW, BAYER CROPSCIENCE LP DISCLAIMS ANY LIABILITY WHATSOEVER FOR SPECIAL, INCIDENTAL OR CONSEQUENTIAL DAMAGES RESULTING FROM THE USE OR HANDLING OF THIS PRODUCT.

LIMITATIONS OF LIABILITY: TO THE EXTENT CONSISTENT WITH APPLICABLE LAW, THE EXCLUSIVE REMEDY OF THE USER OR BUYER FOR ANY AND ALL LOSSES, INJURIES OR DAMAGES RESULTING FROM THE USE OR HANDLING OF THIS PRODUCT, WHETHER IN CONTRACT, WARRANTY, TORT, NEGLIGENCE, STRICT LIABILITY OR OTHERWISE, SHALL NOT EXCEED THE PURCHASE PRICE PAID, OR AT BAYER CROPSCIENCE LP'S ELECTION, THE REPLACEMENT OF PRODUCT.

Bayer (reg'd), the Bayer Cross (reg'd), Drione® and Backed by Bayer™ are trademarks of Bayer.



13"

4.375"

For **MEDICAL** and **TRANSPORTATION** Emergencies **ONLY** Call 24 Hours A Day 1-800-334-7577
For **PRODUCT USE** Information Call 1-800-331-2867

FIRST AID	
If on skin or clothing:	<ul style="list-style-type: none"> Take off contaminated clothing. Rinse skin immediately with plenty of water for 15 - 20 minutes. Call a poison control center or doctor for treatment advice.
If in eyes:	<ul style="list-style-type: none"> Hold eye open and rinse slowly and gently with water for 15 - 20 minutes. Remove contact lenses, if present, after the first 5 minutes, then continue rinsing eye. Call a poison control center or doctor for treatment advice.
If swallowed:	<ul style="list-style-type: none"> Immediately call a poison control center or doctor. Do not give any liquid to the person. Do not induce vomiting unless told to by a poison control center or doctor. Do not give anything by mouth to an unconscious person.
HOT LINE NUMBER [PYRETHROID]	
Have the product container or label with you when calling a poison control center or doctor, or going for treatment.	
NOTE TO PHYSICIAN: Contains petroleum distillate. Vomiting may cause aspiration pneumonia.	

PRECAUTIONARY STATEMENTS

HAZARDS TO HUMANS & DOMESTIC ANIMALS

CAUTION

Harmful if absorbed through skin. Causes moderate eye irritation. Avoid contact with skin, eyes or clothing.

ENVIRONMENTAL HAZARDS

This product is toxic to aquatic organisms, including fish and invertebrates. Drift and runoff may be hazardous to aquatic organisms in water adjacent to treated areas. This product may contaminate water through runoff. This product has a potential for runoff for several weeks after application. Poorly draining soils and soils with shallow water tables are more prone to produce runoff that contains this product.

Do not apply directly to water, to areas where surface water is present or to intertidal areas below the mean high water mark. Do not contaminate water when disposing of equipment wash-waters or rinsate.

This product is highly toxic to bees exposed to direct treatment on blooming crops or weeds. Do not apply this product or allow it to drift to blooming crops or weeds while bees are actively visiting the treatment area.



(01)00785740193839

Produced for:
Bayer Environmental Science
A Division of Bayer CropScience LP
2 T. W. Alexander Drive
Research Triangle Park, NC 27709

BACKED
by **BAYER**™

Bayer



Drione® INSECTICIDE

- RECOMMENDED FOR INDUSTRIAL/COMMERCIAL USE
- A DESICCANT DUST
- PROVIDES QUICK CONTROL
- KILLS UP TO 6 MONTHS WHEN LEFT UNDISTURBED
- NON-STAINING AND RELATIVELY ODORLESS
- FOR USE IN RESIDENCES, INSTITUTIONS, FOOD PLANTS, AND GRANARIES
- CONTROLS ANTS, COCKROACHES, SILVERFISH, BEDBUGS, FLEAS, LICE, BEES, AND AS STIPULATED IN THE USE DIRECTIONS, ON NUMEROUS STORED PRODUCT PESTS AND TO PROTECT AGAINST ENTRANCE OF DRYWOOD TERMITES.

ACTIVE INGREDIENTS:

Pyrethrins:	1.0%
* Piperonyl Butoxide	10.0%
Amorphous Silica Gel:	40.0%
** OTHER INGREDIENTS:	49.0%
TOTAL:	100.0%

* (butylcarbityl) (6-propylpiperonyl) ether and related compounds.

** Contains Petroleum Distillate

EPA Reg No. 432-992

KEEP OUT OF REACH OF CHILDREN
CAUTION

See inside leaflet for complete First Aid Instructions, Precautionary Statements, Directions for Use and Storage and Disposal Instructions.

Net Contents
1 Pound
04191241
04490818E 141014AV1

PULL HERE TO OPEN ▲